

630* 221:630* 24 221

1943

1952 .,

1995 - 1996 .

[1],

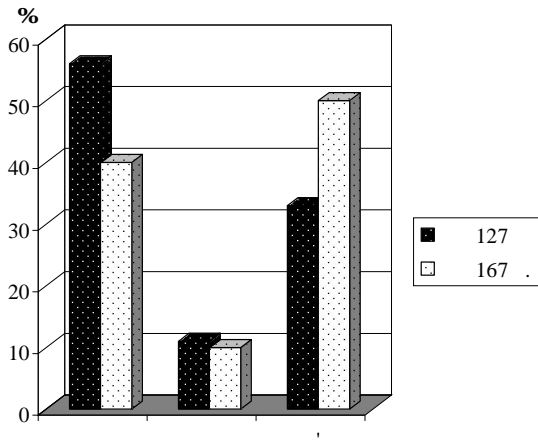
0,4,

;
0,5.

(.).

07 - 01

, , 3 6 . / .



100 – 130-

5 . . / .

10

« »

20-25 / .

()

5-

•

•

) (

);

•

(

. «

« 5 2006 .),

40

0.05

« »

30%

4 – 5

•

•

•

•

•

5-

20 – 25

1.

2003. – 404 .

IMPROVEMENT OF FOREST REGENERATION FELLING AND SANITARY FELLING IN PINE-WOODS OF POLESSIE REGION

Savuschik . . , Popkov . Yu.

Main rules which regulate felling in the forest are analyzed. Particular provisions are shown as inconsistent with their interpretation by the forest enterprises. It concerns, first of all, forest regeneration felling. The receptions of conducting of sanitary felling are resulted.

Forest regeneration felling, sanitary felling, felling rules.